

ING. LINDA SCHIPANI S.R.L.



ArtEcoDesign in Factory

www.lischi2000.it

Ing. Linda Schipani S.r.l.
Art & Engineering for environment

Linda Schipani, is an Italian environmental engineer



who, linking her profession in waste management with her passion for art and technology, develops an innovative project to reduce the environmental negative impact of the industrial processes.

The strategy she proposes to every productive activity, called *ArtEcoDesign*, is to realize new products using waste materials and optimizing every possible resource through environmental sustainable cycle fed by creative power.

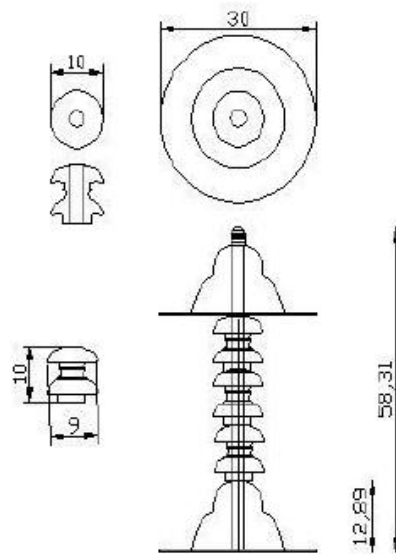
The idea takes form in the electrical and electromechanical family's factory with the aim to save old industrial materials through their transformation in pieces of art and design elements.



Old unused components of electrical and street lighting systems, such as ceramic isolators, ceramic isolators, light bulbs, Pvc tube, wooden bobbins and pallets, takes a new electrical and ecological design register as

EcoLectricDesign

Di Linda Soliani





An experience in which she involved more than one hundred artists, one collective exhibition for each materials, creating a truly unique art-collection exhibited in her fascinating industrial space.

“Bobine d’artista”



MANTILLA



SERBOLI

2008



TERESANO



ORIGLIO



MILITTI



QUARTARONE



CANNISTRACI TRICOMI



RANDO



PUGLIATTI



VALENTINI



MARINI



BORGIA



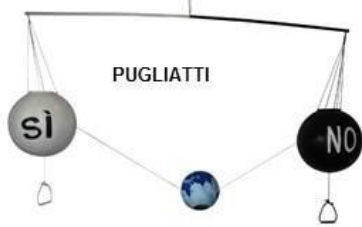
Wooden bobbins

"Sfere d'artista"

2009



Pvc
spheres



PUGLIATTI



DI PRIMA



SERBOLI



PRIVITERA



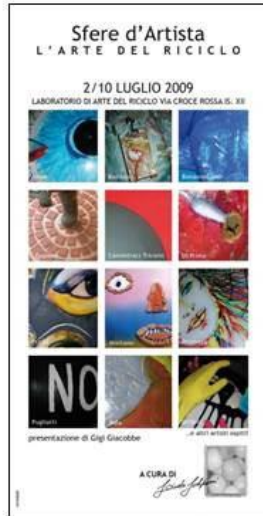
GOLINO



LA FAUCI



BRUNEO



MISITANO



CANNISTRACI
TRICOMI



BAMBINO

BONANNO CONTI



FRADA'



BARATTA



AMOS

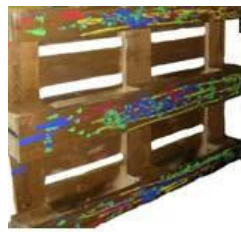


PAFUMI

2010



Wooden pallets



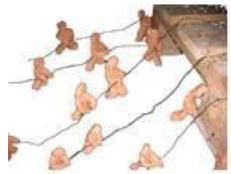
BARATTA



PUGLIATTI



PRIVITERA



CASO PANZA



MISITANO



GEMELLI



BOSSA



DI SERI



GALIPO'

Pedane d'artista

Pedane d'Artista
L'ARTE DEL RICICLO

8/15 APRILE 2010
EcoLab
Via Cristo Re, 4 - PESSINA

			Bambino
			Dr. Pasquale
			Galipo
			La Fauci
			Salzano

presentazione di Gigi Giacobbe ... e altri artisti

e cura di *Gianni*



SALZANO



LA FAUCI



BAMBINO



ARENA



ALESSI



DE PASQUALE



AMOS



GUGLIANDOLO

Tubi d'artista

FRADA'



GUGLIANDOLO



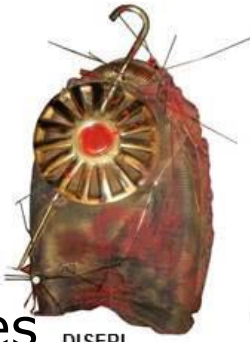
DE PASQUALE



AMOS



MICELI



DISERI



COSTA



SANSONE G.



BIVIANO

CARDILE

PULA

BASILE



SACCA'



GALIPO'

SANSONE U.



LATTENE



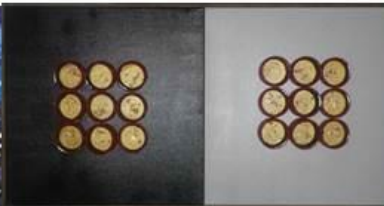
BARATTA



2011



corrugates tubes



Cilindri d'Artista



OTERI
ABBADESSA



CARPENZANO



BIVIANO



BOSSA

MISITANO

AMOS



2012

GUGLIANDOL
O

AL REVE'S



FINOCCHIARO



GALIPO'



SANSONE



PIPITO'



SACCA'



CANNISTRACI TRICOMIPUCCIO



BONANNO
CONTI



PICCIOTTO



BARATTA



LATTEN
E



LAMBERT



CURCURUTO



CANNISTRACI PETTINATO



FRADA'



MAIO



DE PASQUALE



Dielectric
cylinder

2013



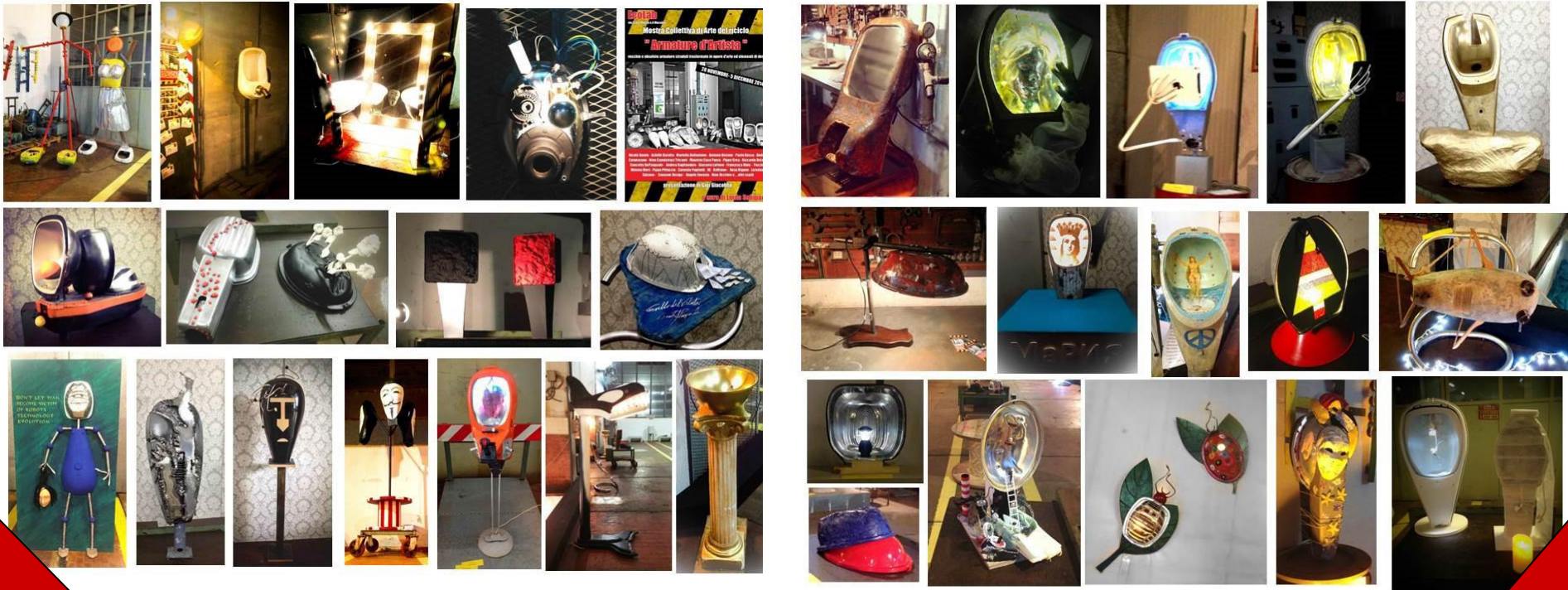
Metal
trees



2014



Street lighting aromors



2016



Dielectric
paper

Carte d' Artista

Mostra Collettiva di Arte del Riciclo

a cura di Linda Schipani



EcoLab

Via Croce Rossa n.8, Messina
tel. 328-2008948
lischi2000@yahoo.it
www.lischi2000.it



Illa Currò
- 1906 -



Gregorio Cesario
- Lume ad olio -



Achille Baratta
- Iarrusa Riusa -



Nino Bucalo
- Saida -



Alexandra Stratulica
- Frammentario -



Nino Uochino
- Calendario -



Amalia Cesario
- Paladini -



Giovanni Allo - Optcalibrato -



Mariella Bellantone - Oltre il Buio -



Franco Currò - Sirena -



Mamy Costa - Re-MacLe -



Mauro Cappotto - Osservatorio IV -
Antonio La Colla - sole sul Mar Mediterraneo-
Giorgio Gristina - Mediterraneo -



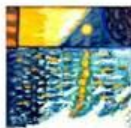
Concetta De Pasquale
- Le Parole della Luna -



Maria Rando
- Intimo Segreto -



Marcella Gemelli



Togo
-Paesaggio Mediterraneo-



Luigi Ghersi
- Giochi d'Acqua -



Gigi Sansone
- Introspective Selfies 1-2-3 -



Demetrio Scopelliti - Frammenti di Memoria-
Rosa Rigano - Scala della Speranza -
Pasquale Marino - Esterno con Riflessi -



Enzo Fradà
- Ms. Pac-Man -



Ugo Sansone
- Puntine Elettriche -



Lillo Messina - Spiaggia - Nel Mare -



Mostra Collettiva di Arte del Riciclo
Coppe d' Artista

a cura di Linda Schipani



EcoLab

Via Croce Rossa n.8, Messina
tel. 328-2066948-
lischi2000@yahoo.it
Wwww.lischi2000.it



2017



Prismatic
glass
cups



EcoLectricDesign proposes itself as a possible model of environmental strategy, to be adopted by different industries with the purpose of minimizing the production of waste by means of a smart, positive, creative and ecological approach to the problem:



ArtEcoDesign in Factory

creates your own green
products under a new
eco-brand conceived for
your activity



A lot of waste could be an important resources for a cultural and economic growth all over the world.



An exhibition in a St. Moritz jewelry takes shape from a landfill of Dakar because art can change materials



The art and engineering can turn a plastic bottle into a precious jewelry through a project that combines luxury and environmental sustainability



ECOtemporary
Jewelry

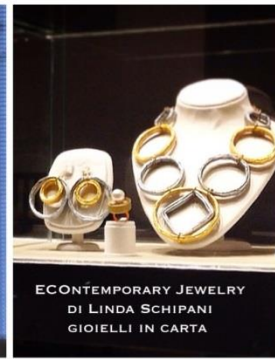
Art in a Plastic World

ING. LINDA SCHIPANI S.R.L.

ARTE & AMBIENTE







ECONTEMPORARY JEWELRY
DI LINDA SCHIPANI
GIOIELLI IN CARTA



ECONTEMPORARY
JEWELRY
ART IN A PLASTIC
WORLD
LINDA SCHIPANI



Plastic, paper, films and electrical components become EContemporary jewels and fashion, bringing environmental sustainability on the international catwalk.





Wall paper



Photo shooting in the old waste incinerator with fim

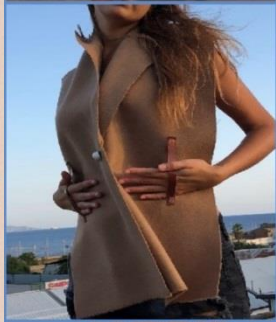




vest of ties



textile
cuttings



Sicilian fashion museum of Mirto



Dielectric paper and films